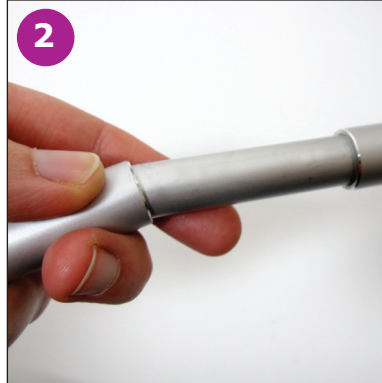


## SET UP INSTRUCTIONS:

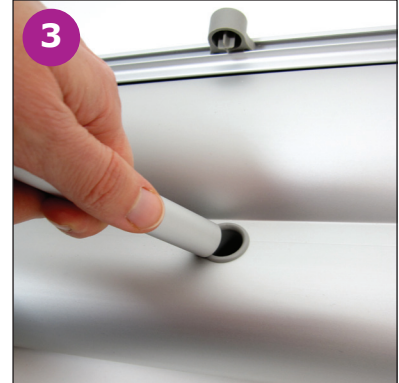
*gawck retractable plus™* | *gawck retractable plus, extra-wide™*



1 Remove all pieces from the transport bag



2 Assemble the pole



3 Insert the end of the pole into the base



4 Carefully tip the pole side of the stand towards you and gently pull graphic rail upwards



5 Secure the top cap of the graphic rail to the top of the pole



6 Finished piece

### NOTE:

When disassembling, hold top rail securely at center. Allow banner to retract slowly and evenly into base.