

SET UP INSTRUCTIONS:

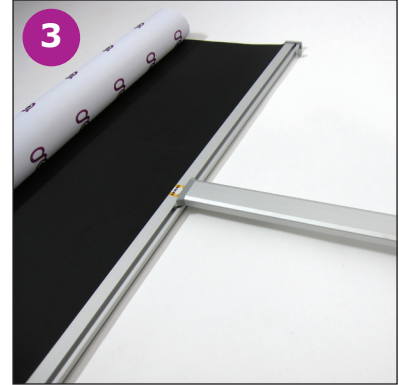
gawck L™



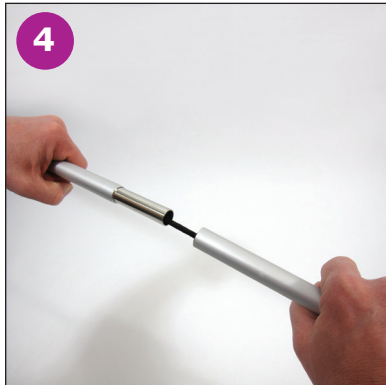
1 Remove all pieces from the transport bag



2 Lay graphic down with bottom rail exposed



3 Place foot into groove of bottom rail as indicated by arrow on rail



4 Assemble pole



5 Thread pole onto base



6 Place your foot on the base, your arms on either side of the pole and unroll graphic



7 Flex pole forward and insert end into top rail groove



8 Finished piece

NOTE: When disassembling, roll graphic from the top, with black side facing out. Place graphic into inner cardboard sleeve and support arm into outer tube.